



PATHTOPROSPER.ORG

Independence Through Education

STRATEGIC PLAN

CONTENTS

MISSION STATEMENT: INDEPENDENCE THROUGH EDUCATION

IDENTIFYING THE PROBLEM

- Extreme Poverty
- The Gap Between Education and Employment
- Provision, Consistency, and Support

THE MASTER PLAN

1. Professional Training

- Skills for Independent Living
- Courses, Programs and Supplies
- Increased Employment Opportunities

2. Empowering Women and Gender Equality

- Equal Access and Opportunity
- Tackling Gender Inequality and Discrimination
- Breaking the Cycle of Poverty

3. Community Engagement and Support

- Trusted Community Leaders
- Local Needs and Resources
- Partner Organizations

4. Remove the Need for Aid

- Building a Sustainable Model
- Financial and Data Transparency
- Our Donation Process

YOUR ROLE IN OUR MASTER PLAN

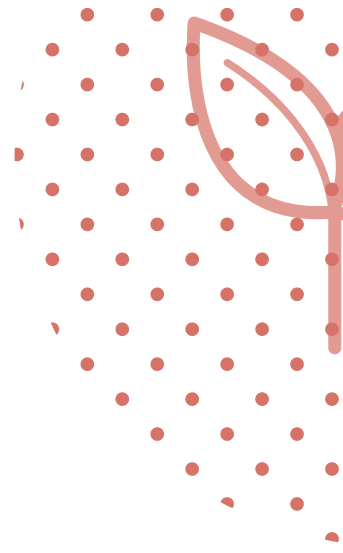
- Donations
- Scholarships
- Fundraising

Mission Statement

To provide professional training for young adults in areas of extreme poverty.

To empower women, and advocate for equal access and opportunity.

To build a sustainable model that removes the need for aid.



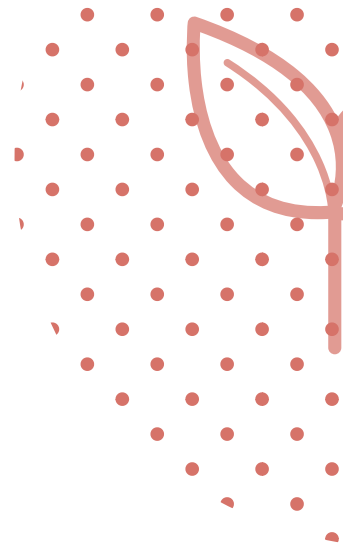


Identifying the problem

Extreme poverty is defined as living on less than \$2 a day

In 2020, global extreme poverty is expected to rise for the first time since 1998 as the disruption of the Covid-19 pandemic compounds the forces of conflict and climate change. As a result, many who had just escaped extreme poverty in recent years could be forced back into it, with an estimated increase of 88 million to 115 million people this year, bringing the total to between 703 million and 729 million.

To tackle this in its entirety feels insurmountable, and to picture life below the poverty line is unimaginable. However, at Path To Prosper, we have found an area where we believe we can help. Over the last decade as The Shelo Foundation, we have learned the value of education, of educating girls and women specifically. More importantly, we have seen a gap that has yet to be filled, and that we believe can assist in the effort to tackle extreme poverty.



Extreme Poverty

The UN has stated an ambition to fight global poverty and plans to achieve this through the setting and meeting of the Sustainable Development Goals (SDGs). They recognize that ending poverty and other deprivations must go hand-in-hand with strategies that improve health and education, reduce inequality, and spur economic growth.

Our primary focus will be on SDG goals 1.1, 4.4, and 4.3:

“To end poverty in all its forms everywhere” by 2030.

Extreme poverty is currently measured as people living on less than \$2.

In Uganda, the last available data tells us that 41.7% of the population are living on less than \$1.90 per day.

“To substantially increase the number of youth and adults who have relevant skills, including technical and vocational skills, for employment, decent jobs and entrepreneurship”.

“To substantially increase the number of youth and adults who have relevant skills, including technical and vocational skills, for employment, decent jobs and entrepreneurship”.

We believe that the work of Path to Prosper aligns with the goals of the UN and we are taking active steps to ensure these goals are met by the communities we work with.

Our Needs Assessment, available [here](#), details how our work aligns with the UN and World Sustainable Development Goals (SDGs), and provides evidence to support our case for professional training, gender equality, and the development of a sustainable model.

The Gap Between Education and Employment

Between 2010 - 2020, we as The Shelo Foundation supported the primary and secondary education of vulnerable children in eastern Uganda.

Throughout this time, we became increasingly aware of the gap between education and employment; young adults who graduate from secondary school often cannot find suitable employment.

Without access to tertiary education or an employable skill that is needed by the community, they are left without an income, and ultimately unable to escape poverty. In areas of extreme poverty, this is especially true for girls and women who are often excluded from education and employment entirely.



Provision, Consistency, and Support

Witnessing this gap between education and employment led us to consider the impact we could have by providing young adults with access to professional training, empowering women with equal opportunity and access to employment, and equipping individuals and communities with the necessary skills for independent living.

We made the decision to transition from The Shelo Foundation to Path to Prosper and change the focus of our support from primary and secondary education to professional training, aiming to fill the gap between education and employment. Our core values as a charity have not changed, our focus remains on developing innovative, sustainable solutions, and to tackle extreme poverty. We will continue to provide consistent support for the individuals we have worked with over the past 10 years and the communities in which they live.





1. Professional Training

In areas of extreme poverty, there is little to no funding for professional training.

Our program is designed to bridge this gap between education and employment by providing young people with the necessary skills to work and live independently.

Skills for Independent Living

As it stands, of the 65% of children in Uganda who begin secondary education,

only 24% graduate.

Without further training they are often left with no opportunity to develop employable skills.

Courses, Programs and Supplies

From our experience of working with students and schools in this community, we recognize the vocational courses and training programs that will engage young adults, offer them the greatest chance of employment, and provide them with the necessary skills to excel.

We will provide the funding for students to attend high quality training institutions that are otherwise financially inaccessible. These schools provide courses and programs such as teaching, nursing, carpentry, and hairdressing.

Nursery teacher • Primary teacher

Secondary teacher

Building & Construction • Tailoring

Coupling and Joinery

Carpentry • Hairdressing • Clinical Officer

Pharmacist

Nursing • Midwifery • Electrician

Car Mechanic • Plumber • Driving

Increase Employment

In Uganda, many people are entirely reliant on subsistence farming, and there is little to stimulate a cash economy. We can help break this cycle by giving young adults the opportunity to train in a vocation that will enable them to generate an income.

We engage respectfully with community leaders, collaboratively seeking solutions to local problems, and identifying areas where employment and professional training are needed most. By both acknowledging and catering to an array of needs, we can enable individuals and communities to prosper.



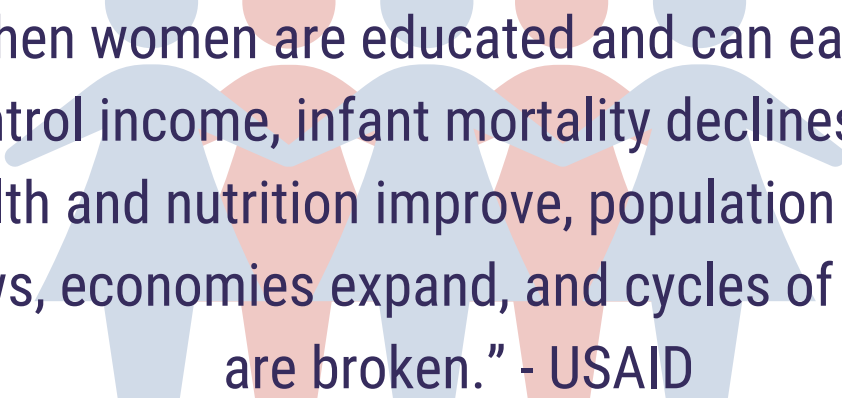




2. Empower Women

Path To Prosper provides equal opportunities for the students that we support.

We strive to tackle gender equality issues surrounding education beyond financial aid. We will continue to educate ourselves and our community about gender equality, and further understand the impact of educating and empowering women on tackling discrimination and breaking the cycle of poverty.



"When women are educated and can earn and control income, infant mortality declines, child health and nutrition improve, population growth slows, economies expand, and cycles of poverty are broken." - USAID

Equal Opportunity

At Path to Prosper we believe in equal opportunities, and we will always support equal numbers of young women and men within our programmes.

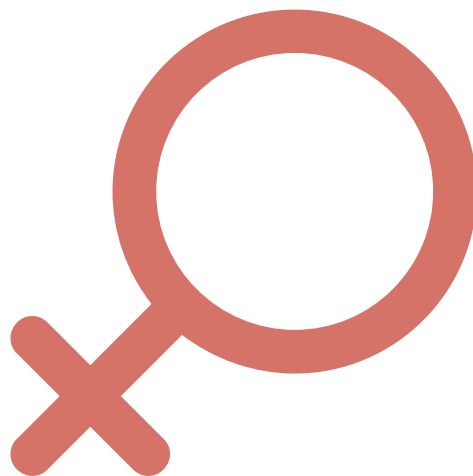
In areas of extreme poverty, patriarchal gender norms drive discrimination against women, often excluding them from the solutions to poverty, or depriving them of access to education and employment. Our community leaders have recognised that the barriers to accessing education for girls start from a young age. Due to extreme poverty many households struggle to send their children to school, and in the case where they can afford to send one, they typically prioritise a boy over a girl.

If young women are given access to professional training, they are afforded an equal opportunity to become financially and socially independent. With this accessibility, women can choose a profession or vocation to study. With these skills and qualifications, women can choose a job or career. With this empowerment and independence, women can choose when they want to start a family and take control of the course of their life.

Tackling Gender Inequalities and Discrimination

In areas of extreme poverty, gender inequalities and discrimination extend beyond education and employment, and Path to Prosper has worked closely with community leaders and schools in identifying the obstacles faced by girls in our communities.

An inability to access sanitary wear whilst on their period results in girls losing an average of 3 days of school a month, which adds up to approximately 18% of their school year. This is not only a barrier to education but also puts girls at risk of sexual harassment and assault, further restricting their freedom of movement. Path To Prosper will provide every young woman enrolled in our programme with a sanitary pack that will equip them with the necessary materials to attend their classes comfortably, and without interruption.



Cultural norms also result in girls performing a significantly higher proportion of household chores in comparison to their male counterparts, and girls are often married and begin motherhood as teenagers. With access to education and independence, girls and young women are more likely to find work outside of the home, and to start families later in life.

At Path To Prosper, we understand that tackling inequality goes beyond financial aid. We will continue to identify barriers faced by women and aim to tackle these head on. We demand better for the girls and women in our communities.



Breaking the Cycle of Poverty



At Path To Prosper, we understand that providing women with education and professional training is essential to tackle the cycle of poverty.

Empowered women who have financial independence through equal access to education and employment provide myriad societal and economic benefits to their communities. For example, educating girls has a direct positive impact on the health of their future children: a child whose mother is able to read is 50% more likely to live past the age of 5. Women entering employment may also result in an increased school enrolment for their children, including girls, triggering a positive cycle of attainment of education and employment.

Empowered women are equipped to fulfil their potential. With access to professional training comes the independence of employment, and the freedom to choose their own path.

This ethos will continue to inform every aspect of our work.





3. Community Engagement and Support

At our core, Path To Prosper is about helping both individuals and communities achieve their full potential.

We aim to provide funding for professional training in order to help our communities become self-sufficient, working on the premise that as well as economic benefits, education contributes towards social cohesion, economic growth and more prosperous living for individuals and communities.

Trusted Community Leaders

Over the last ten years, we have continued to appreciate the value of trusting and understanding the communities in which we work. We have engaged and collaborated with key community leaders, and their guidance has been instrumental in offering bespoke support to the most vulnerable members of their community, and in identifying their greatest needs.

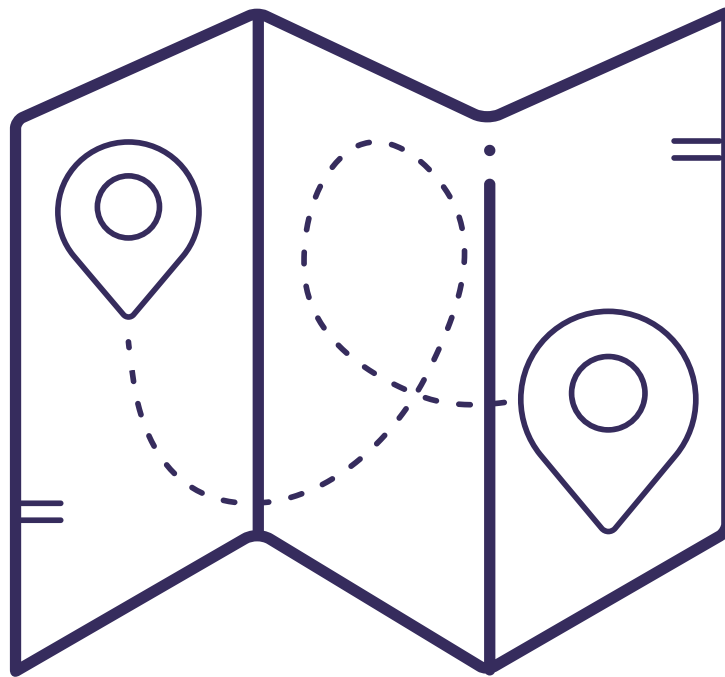
Path To Prosper recognizes the importance of listening to trusted community members and leaders in order to fully understand the ways in which we can best offer support. Most importantly, these relationships also determine our enrolment process, as students are selected and put forward by community leaders who recognize and value their potential.



Local Needs and Resources

In order to help communities prosper, we must first identify local needs and resources; which industries are most likely to provide employment opportunities, and which local schools and programs can best provide the necessary professional training.

Path To Prosper supports communities in finding local solutions to local problems. We ensure that young adults are receiving professional training in areas that require a greater workforce in their surrounding area, and can have a direct impact on their local economy.



Partner Organisations

Path To Prosper is in itself a community, and thrives because of collaborations and trusted relationships with fellow organisations.

Partnerships are crucial for us to support our communities with consistency. We aim to provide the highest standards of education, and the most knowledgeable insights into how local needs and resources evolve over time. Because of this, we only partner with organisations that provide training opportunities based on local needs.

It is through this network of allies that we can best support our students, and ensure that the financial aid we receive from our network of donors is being put to its best possible use.







4. Remove the Need for Aid

Path To Prosper sees the need for professional training in areas of extreme poverty as a global issue.

In response to this, we aim to create a sustainable model that potentially removes the need for future aid, and that could be applied as a next step for established child sponsorship programs worldwide.

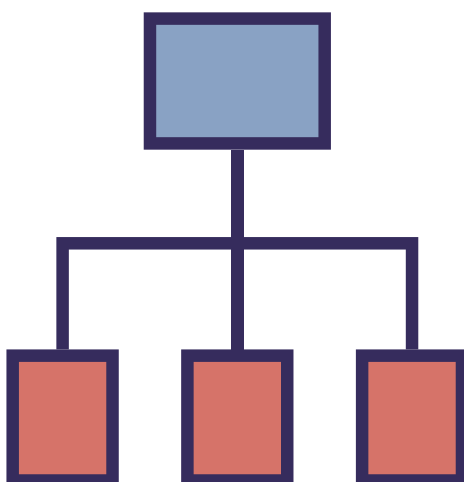
On the ground, we are creating a self-sustaining network that will continue to lift individuals and families out of poverty. Around the world, we empower communities, and encourage our global community of donors to support them.

Building a Sustainable Model

In the future, we would like to bring this model to other areas of extreme poverty. Of course, we recognise that the first step in creating a sustainable model is to perfect the original.

Before we can take this to other areas of extreme poverty, our primary focus will be on Bududa, Uganda. This is where our team has worked and successfully contributed to an increase in education and economic growth over the last ten years. This is where our connections are strongest, and our community knows and trusts us to take this next step into funding professional training.

It is from here that we aim to take our insights, experiences and knowledge from our first model to other local areas and communities.



Financial and Data Transparency

Our last ten years has been well documented, and is a valued resource and guideline from which we continue to learn. From the outset, we understood the importance of collecting data that could inform our future as an organization, which is exactly what happened; it is this data that has shifted our focus from primary and secondary education to professional training.

As Path To Prosper, we will continue to collect data as we have before. Only now, our intention will be to use this as an external, transparent resource. With transparency, we can share our methods and practices with our network of donors and partner organizations, building trust in the program that we implement in local communities.

In building a sustainable model, there will be many variables to consider when applying our program to new climates, communities and countries. We must consistently explore how our original model can adapt to other areas of extreme poverty. Transparency with our data, experiences and insights is the best way to ensure that our original model can work beyond Bududa.

Our Donation Process

The way charities are currently funded requires substantial amounts of time and money to further fund and ensure their own existence.

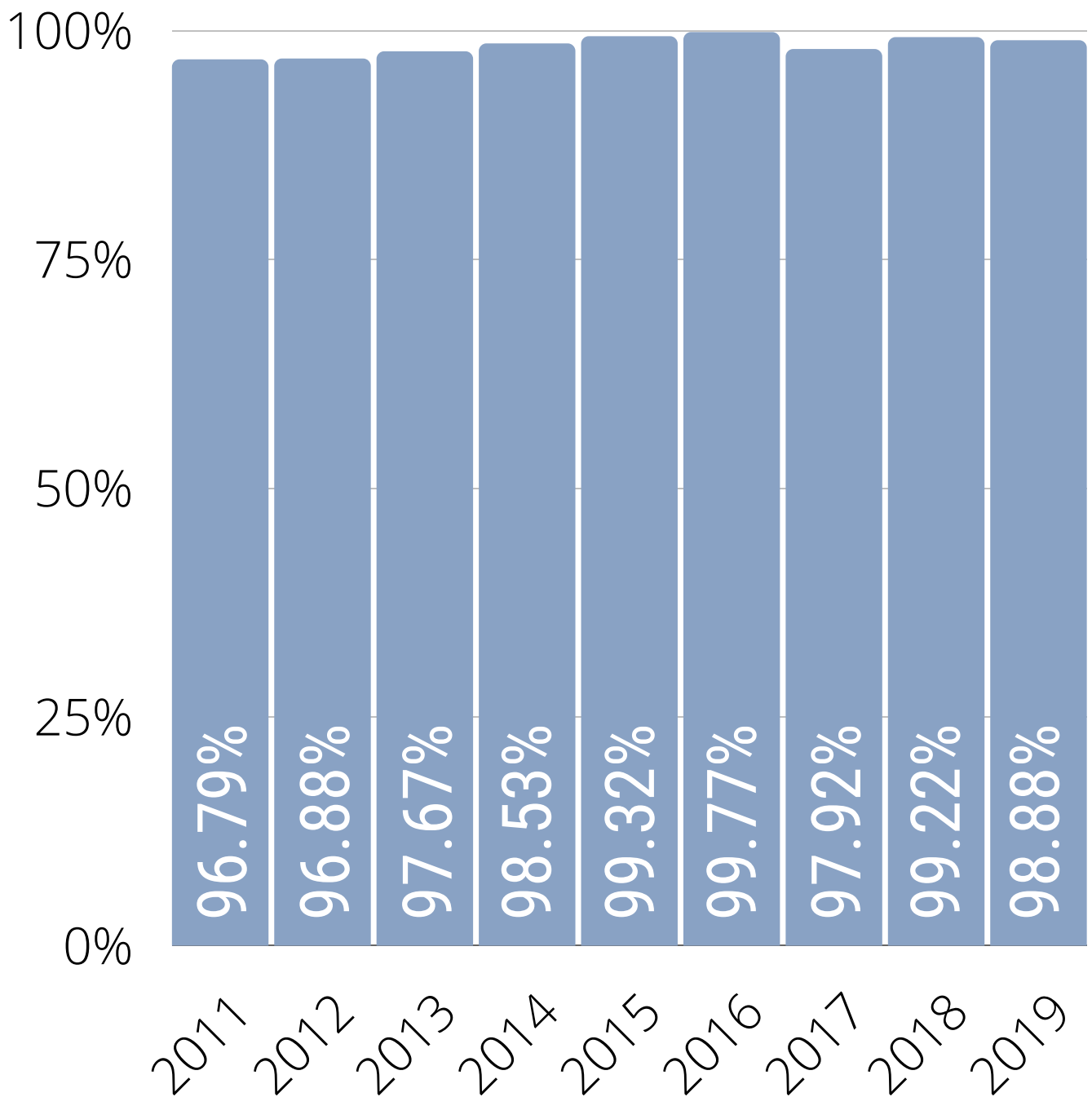
Our donation process works differently. We are powered by volunteers who believe in this mission. This enables us to keep our administrative, promotional and fundraising expenditure to an absolute minimum.



With our model, nothing would please us more than to become completely inessential to the communities in which we are working. Our intention is simply to give communities a kickstart in bridging the gap between education and employment, and provide the necessary tools for independent living.

Independence through education should mean exactly that: an end to reliance on aid.

Percentage of expenditure spent on direct activities **2011 - 2019**





Your Role In Our Strategic Plan

Your donations will help to fund professional training for vulnerable young adults in areas of extreme poverty.

By donating to Path To Prosper, you are funding our students' paths through professional training, improving their livelihood, and increasing their chances of employment.

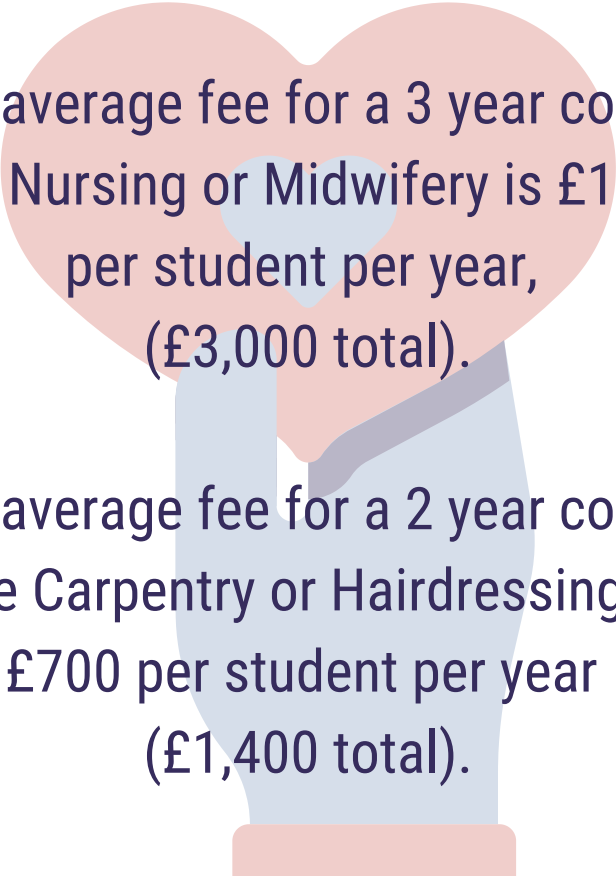




Donations

Our process is simple, transparent, and ensures that all donated money goes directly to supporting those in need.

Your support in providing these education fees can and will change lives.

A stylized illustration of a hand holding a heart. The hand is light blue with a darker blue shadow, and the heart is a light pink color. The text is overlaid on the heart.

The average fee for a 3 year course like Nursing or Midwifery is £1000 per student per year, (£3,000 total).

The average fee for a 2 year course like Carpentry or Hairdressing is £700 per student per year (£1,400 total).

£85/month will support a nursing or midwifery student to qualify as a healthcare professional who will go on to serve their community and save lives.

£60/month will support a carpentry or hairdressing student to find employment in their community, providing local services and boosting the surrounding economy.

Scholarships

As part of our ongoing work and critical engagement with local community leaders, Path To Prosper is seeking gifted individuals who could be eligible for, and who could benefit from such specialised degrees as Medicine and Pharmacy.

In order to provide funding for these courses, we have launched the Path To Prosper Scholarship programme, whereby businesses and individuals can make specially allocated donations to sponsor a gifted child to qualify as a pharmacist or doctor, providing an invaluable service to their community, and allowing them to realise their full potential.



Testimonial from Nashimolo Joel, scholarship student:

“I would really like to thank you for your support. Really no words can describe how thankful I am. I realise how lucky and privileged I am. A lecturer was interviewing each of us [students] about who paid our tuition, our families and our future plans. He was really surprised of what he [heard] from me.

It’s really rare for someone like me to compete favourably with students at a campus. Words are not enough for me to thank you!”

Joel is currently studying Pharmacy,
funded by Path to Prosper.
(Originally funded by The Shelo Foundation)



Fundraising

There are many ways to get involved with Path To Prosper, and to support our community.

If you would like to develop a fundraising campaign, please contact: fundraising@pathtoprosper.org.uk

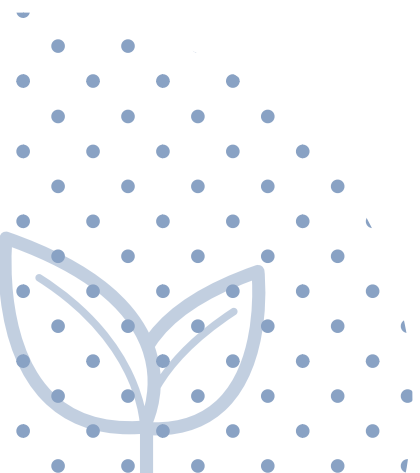
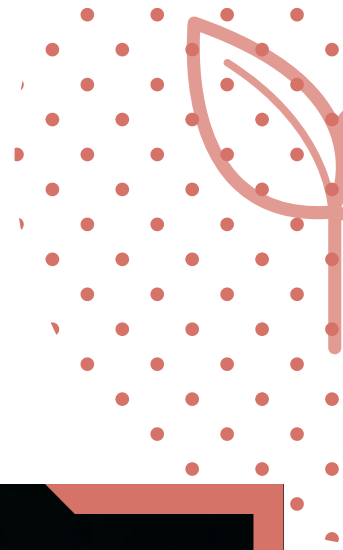
Here is one of our fundraisers, Jack:

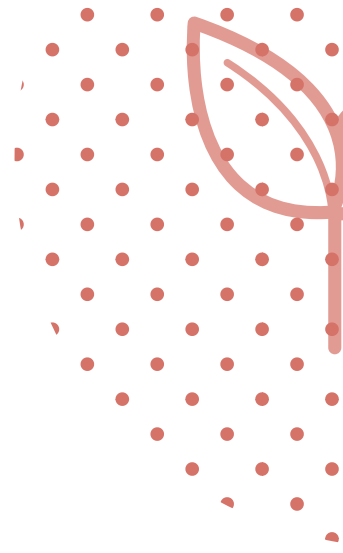
"I first decided to start fundraising for Shelo in 2017. I knew how small and intimate the charity was and could see exactly where the funds would go, which is a contrast to some of the larger charities. I felt the money raised would go a lot further and I knew it would be in trusted hands.

My first event was the 2017 Edinburgh ironman 70.3. I did this with two friends, Mike and Chris and we had a fantastic time. It was a rough event though and one of the main things keeping me going through it was the contributions that so many people had made. I couldn't let them down!

I eventually visited Bududa in 2018 and it was a life-changing experience. To be honest I was quite naive and didn't appreciate the extent of the poverty in Bududa. I couldn't believe the trials and tribulations the children would have to go to just to attend school and it very much put my own life into perspective. I would highly recommend to anyone to go out there and experience it first-hand. You really do end up appreciating everything we have here.

I was also amazed at how dedicated the children were to their studies and their desires to get an education and a job. They were not interested in materialistic things, they just wanted to invest in themselves and their families. It was so refreshing. I was also privileged enough to meet the lovely and friendly team. They were so hospitable and clearly so invested in the children and their community."





THANK YOU

